

## Data Sheet

multi-functional LED surface

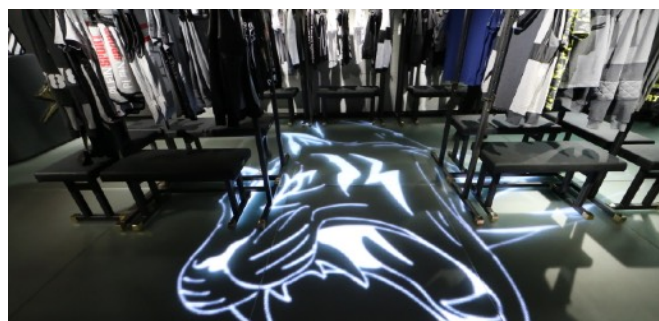
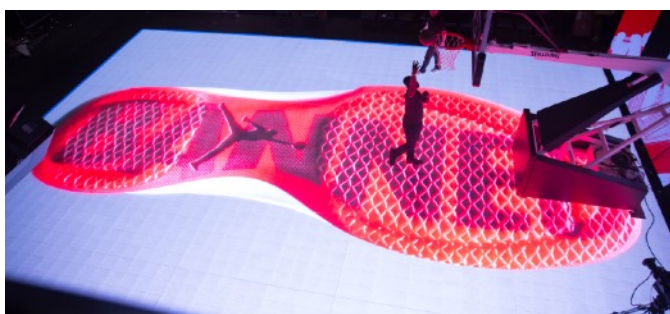


### ASB LumiFlex the full screen GlassFloor

The ASB LumiFlex Glass Floor was designed to transform any space into a one of a kind visual experience. Its patented glass surface is one of the most innovative flooring surfaces ever made

and can be used for a variety of solutions, ranging from sports to concerts, retail to trade shows. The unique sub-structure allows the glass surface to meet the standards for a certified area-elastic sports

surface with fantastic shock absorption. The system can be used indoors or outdoors and even portable floors are possible.



<b>Structural Build Up</b>	
Glass Type	Laminated two layer safety glass panels built from two 5 mm tempered security glass sheets, laminated with a 1.52 mm thick PVB - foil.
Glass Surface	Special etching on the upper surface of the glass panels to prevent light reflection. Burned in ceramic dots for slip resistance.
Glass Dimensions	Glass panel size portable: 2m x 1.5m; fix installation 3 x 2m
LED Screen:	
Pixel Pitch	<b>4.8 mm</b> , 43,264 p/m <sup>2</sup> / <b>3.9 mm</b> , 65,536 p/m <sup>2</sup>
LED Type	RGB 3in1 SMD2525 / RGB 3in1 SMD1921
LED Panel Size	500 mm x 500 mm x 75 mm
Brightness	> 4.500 nit / > 4.500 nit
Refresh Rate	1,920 Hz
Source Compatibility	synchronous DVI / VGA / SDI / HDMI plug and play
Operating Temperature	-10° ~ 50° C
Operating Humidity	10 - 90% RH
Connection	Power: Neutrik (IP65), Data: etherCON (IP65)
Power Consumption avg.	250 W/m <sup>2</sup> / 210 W/m <sup>2</sup>
Power Consumption max.	750 W/m <sup>2</sup> / 630 W/m <sup>2</sup>
Thermal dissipation avg.	597 BTU/m <sup>2</sup> /hour / 502 BTU/m <sup>2</sup> /hour
Thermal dissipation max.	1,792 BTU/m <sup>2</sup> /hour / 1,505 BTU/m <sup>2</sup> /hour
Input Power	AC100-240V, 50-60Hz
Lifetime	min. 50,000 Hours
Build-up hight	min. 150 mm
Joints	Silicon joints attached to glass panels.
Sport Performance	Meets and exceeds EN 14904:2006 / FIBA and IHF certified
Warranty	ASB GlassFloor 10 years, electronic components 2 years.